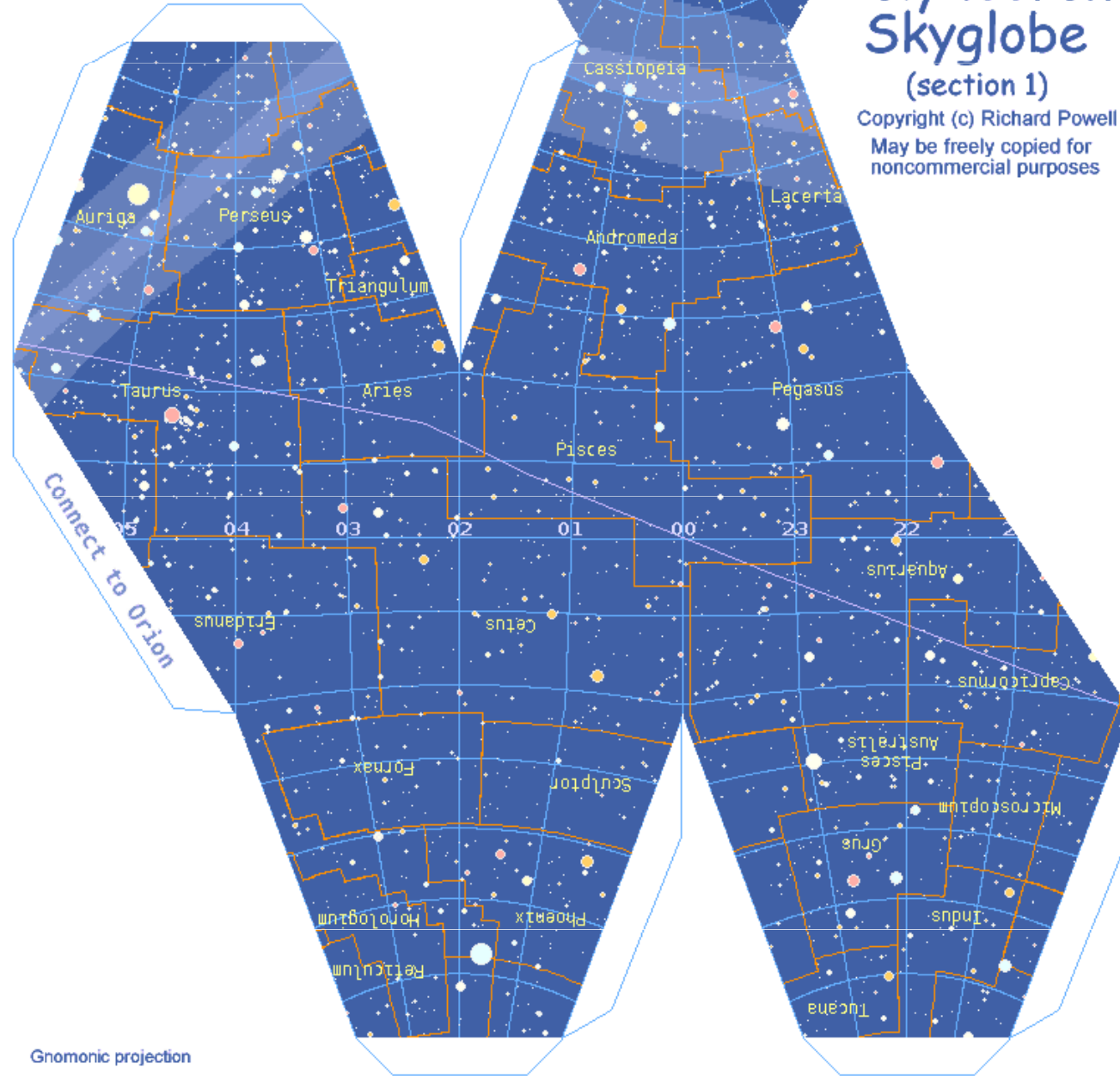
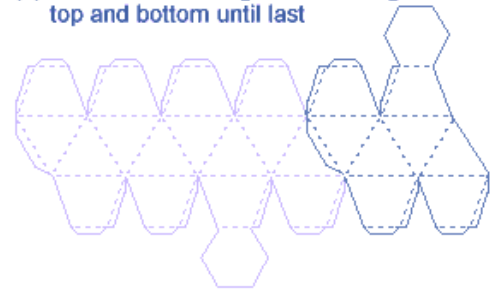
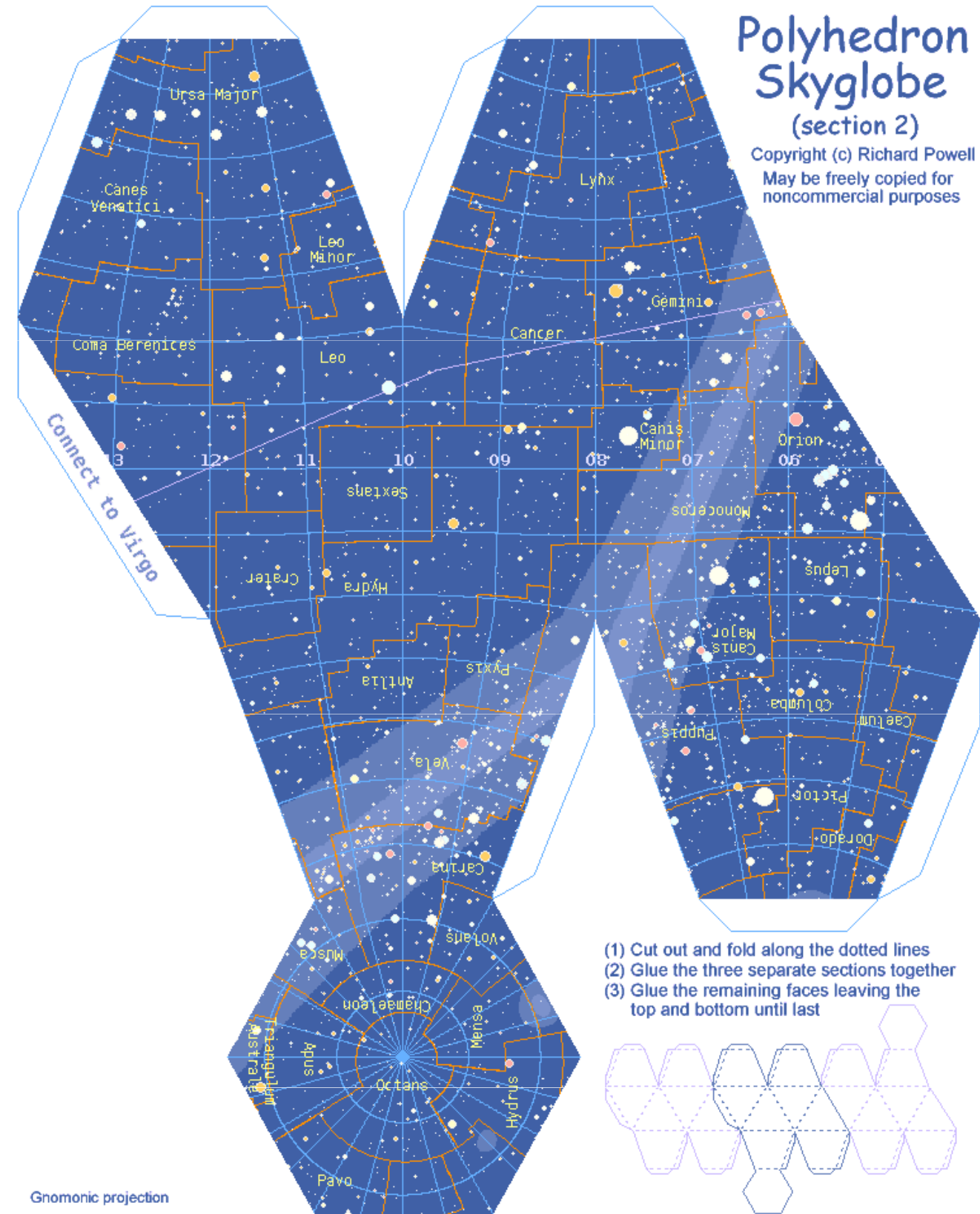


- (1) Cut out and fold along the dotted lines
- (2) Glue the three separate sections together
- (3) Glue the remaining faces leaving the top and bottom until last

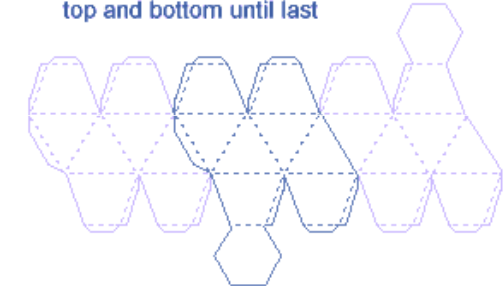


Polyhedron Skyglobe (section 2)

Copyright (c) Richard Powell
May be freely copied for noncommercial purposes



- (1) Cut out and fold along the dotted lines
- (2) Glue the three separate sections together
- (3) Glue the remaining faces leaving the top and bottom until last



Apoio



X Encontro Regional de Ensino de Astronomia

13 a 16 de outubro de 2010, Campo Grande, MS

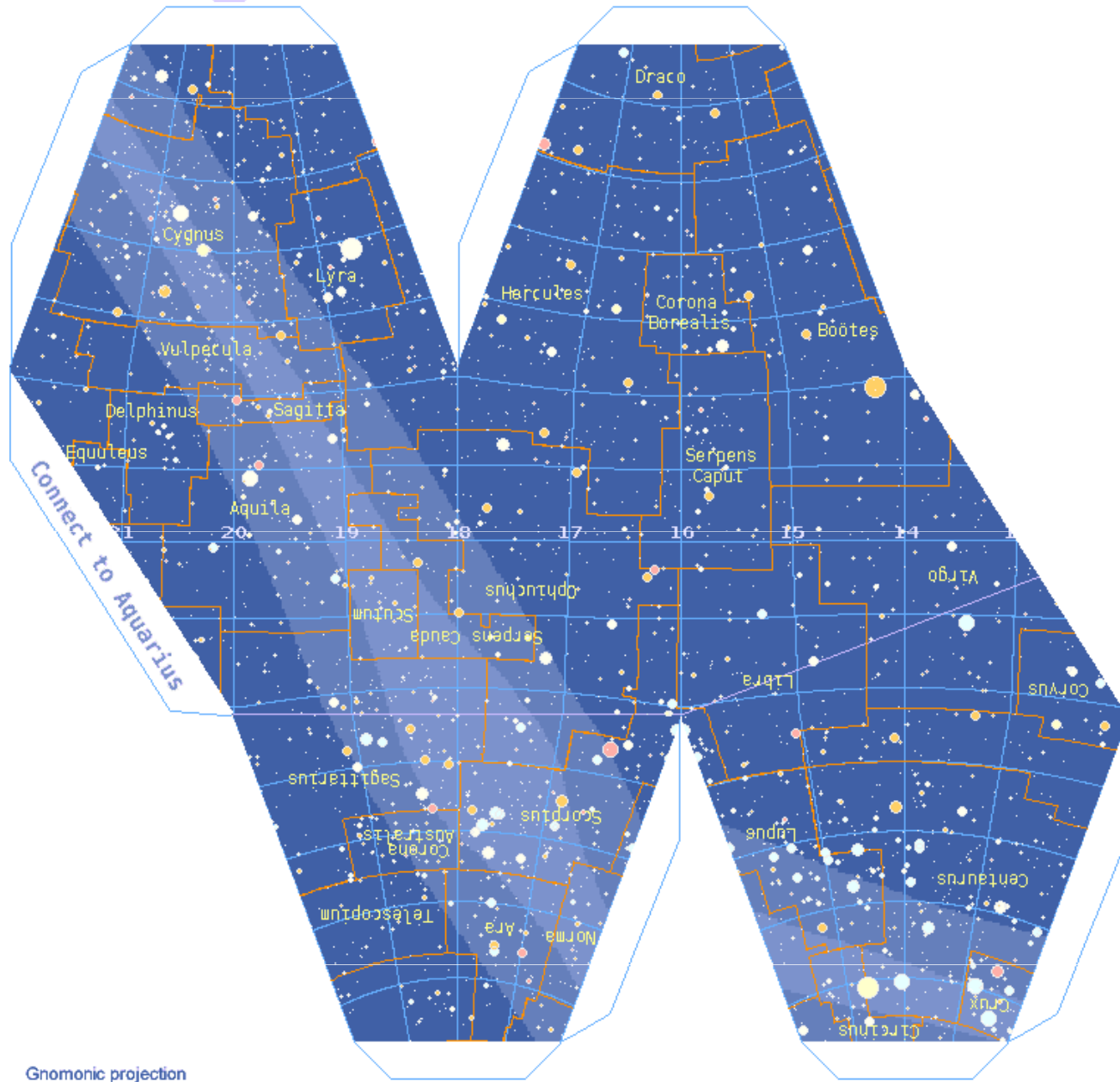
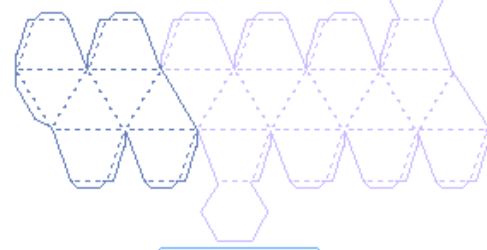
Realização



- (1) Cut out and fold along the dotted lines
- (2) Glue the three separate sections together
- (3) Glue the remaining faces leaving the top and bottom until last

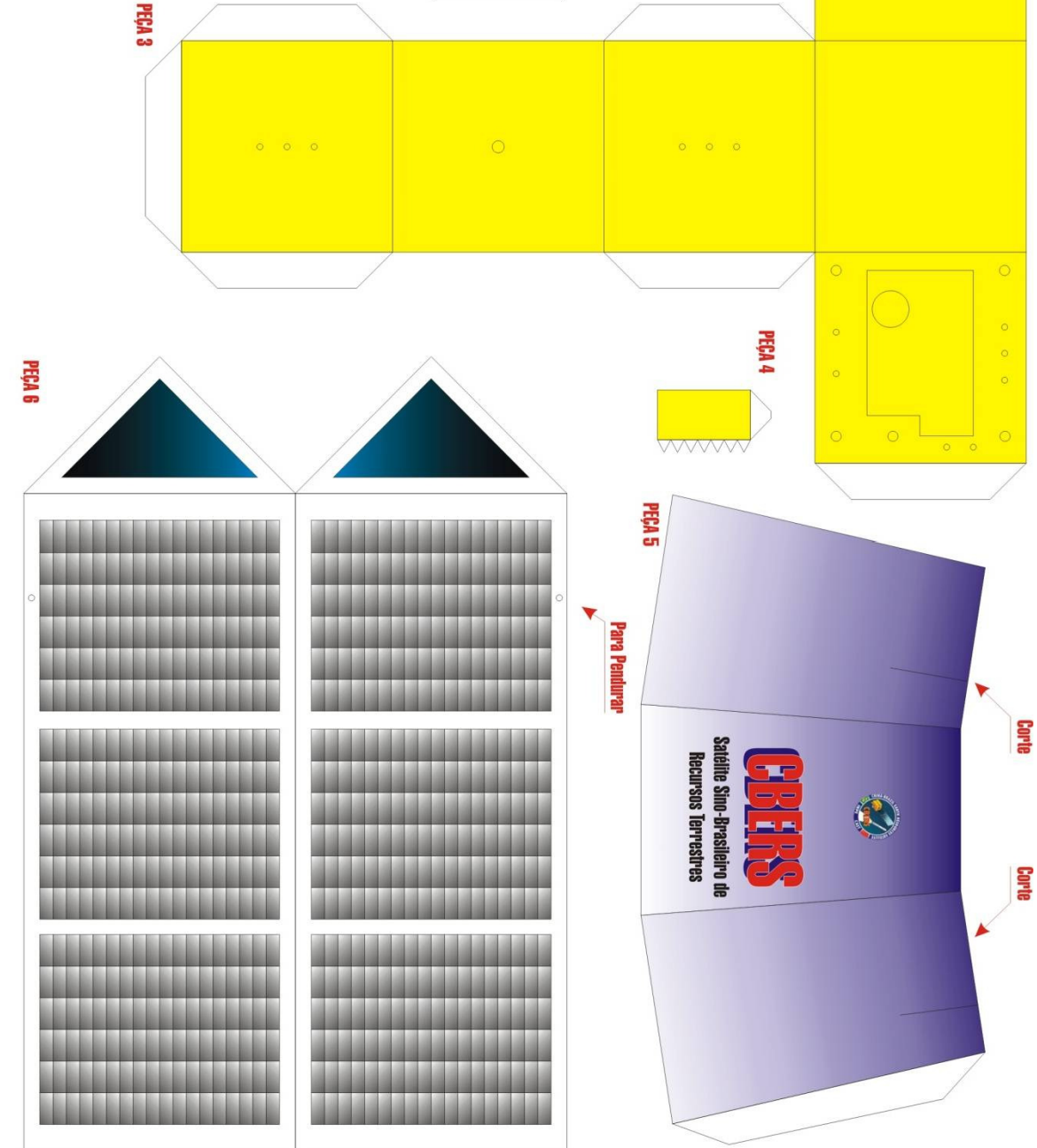
Polyhedron Skyglobe (section 3)

Copyright (c) Richard Powell
May be freely copied for noncommercial purposes



Gnomonic projection

CBERS
Satélite Sino-Brasileiro de Recursos Terrestres
Escala 1:6



Ministério da
Ciência e Tecnologia

Apoio



X Encontro Regional de Ensino de Astronomia

13 a 16 de outubro de 2010, Campo Grande, MS

Realização

